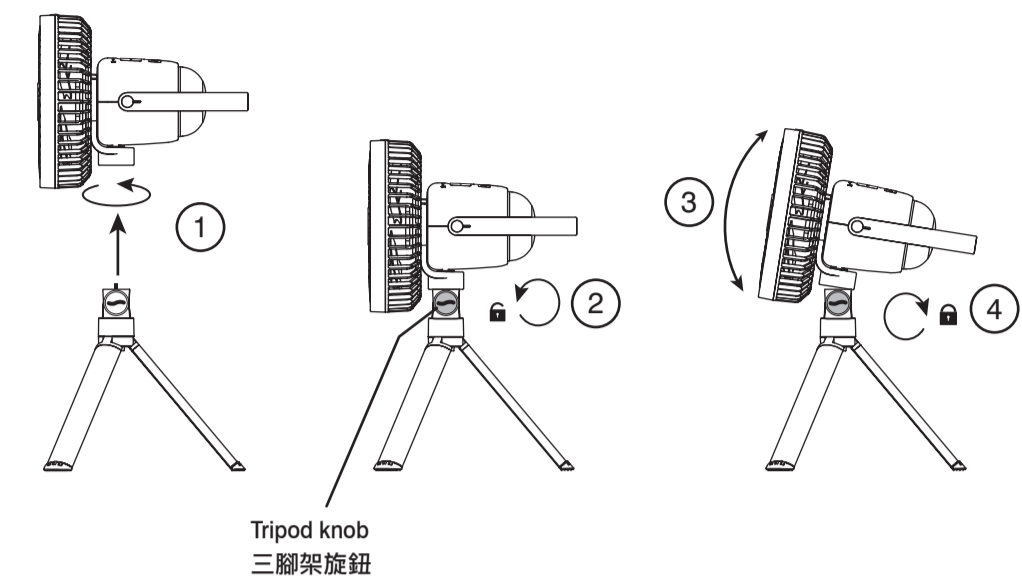




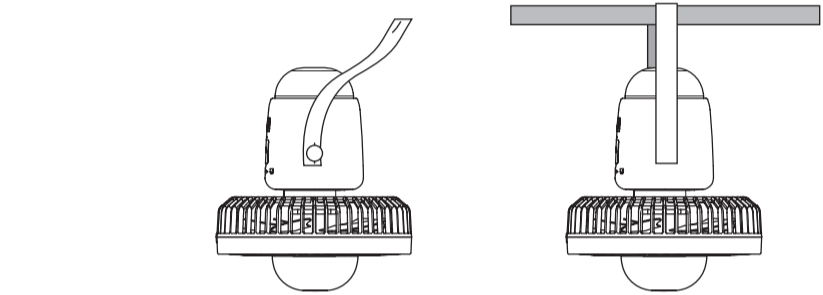
## OPERATING INSTRUCTIONS 操作說明

### Setting up the Fan / 裝設

#### - Using the tripod / 使用三腳架



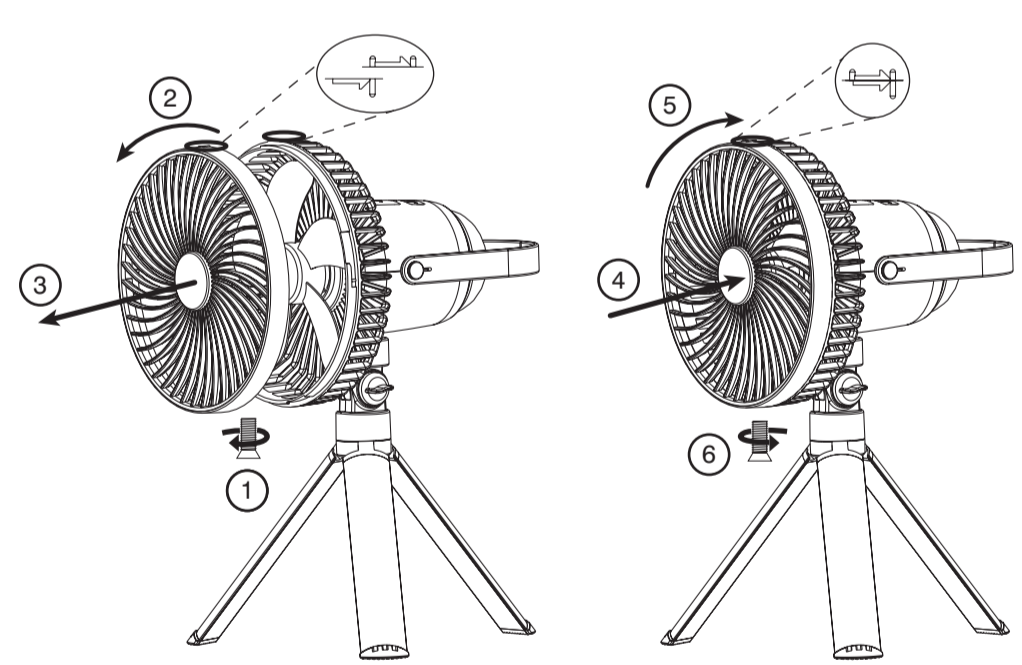
#### - Hanging on a supporting structure / 懸掛於支撐結構上



**⚠ Caution:** Ensure the structure is sturdy enough to hold the fan.

**⚠ 注意:** 請確保支撐架足夠穩固

#### Fan Blade Cleaning / 風扇葉片清潔



Clean the fan blade, front and rear grills with a soft cloth moistened with a mild soap solution. 清潔前請務必關閉風扇並拔掉電源插頭。使用沾有溫和肥皂溶液的軟布，清潔風扇葉片及前後護網。

## SAFETY INSTRUCTIONS

- Do not modify, disassemble, open, drop, crush, puncture, or shred battery.
- Do not immerse the product in water or other liquid.
- Avoid exposure to high temperature.
- Risk of fires and burns. Do not open, crush, heat, or incinerate.
- Keep product away from open flames to prevent heat build-up.
- This product is not a toy, keep away from children. Ensure that all persons who use this product read and follow these warnings and instructions.
- In the event of a cell leaking, do not allow the liquid to come in contact with the skin or eyes.
- Keep the product in a cool and dry place if it is not going to be used for an extended period.
- Do not use this product with damaged cable or plug.
- It is normal for the battery to become hot during charging and it will gradually cool down after charging.
- Charging time may vary depending on remaining charge, battery age and ambient temperature.
- Product should not be left discharged for a prolonged period.
- Product should not be charged while in contact with flammable material like textiles.
- Ensure the product is placed on a stable, level surface during use.
- The light source of this light is not replaceable; when the light source reaches its end of life the whole light shall be replaced.

### DISPOSAL OF THIS PRODUCT



The product contains a Li-ion / rechargeable battery which must be recycled or disposed of separately from household waste. The built-in rechargeable battery must only be removed by a qualified professional when the product is discarded. This marking indicates that this product should not be disposed with other household wastes. To prevent possible harm to the environment or human health from uncontrolled waste disposal, recycle it responsibly to promote the sustainable reuse of material resources. To return your used device, please use the return and collection systems or contact the retailer where the product was purchased. They can take this product for environmental safe recycling.

### CAUTIONS

This device complies with part 15 of the FCC Rules. Operation is subject to the following two conditions: (1) this device may not cause harmful interference, and (2) this device must accept any interference received, including interference that may cause undesired operation.

**NOTE:** This equipment has been tested and found to comply with the limits for a Class B digital device, pursuant to part 15 of the FCC Rules. These limits are designed to provide reasonable protection against harmful interference in a residential installation. This equipment generates, uses and can radiate radio frequency energy and, if not installed and used in accordance with the instructions, may cause harmful interference to radio communications. However, there is no guarantee that interference will not occur in a particular installation. If this equipment does cause harmful interference to radio or television reception, which can be determined by turning the equipment off and on, the user is encouraged to try to correct the interference by one or more of the following measures:

- Reorient or relocate the receiving antenna.
- Increase the separation between the equipment and receiver.
- Connect the equipment into an outlet on a circuit different from that to which the receiver is connected.
- Consult the dealer or an experienced radio / TV technician for help.

Any changes or modifications not expressly approved by the manufacturer could void the user's authority to operate the equipment.

### 1-YEAR LIMITED WARRANTY

Camelion warrants that this product (the "Product") will be free from defects in material and workmanship for a period of one (1) year from the date of purchase (the "Warranty Period"). For defects reported during the Warranty Period, Camelion will, at its discretion, and subject to Camelion's product support analysis, either repair or replace defective Product. Replacement parts and products will be new or serviceably used, comparable in function and performance to the original part and warranted for the remainder of the original Warranty Period. CAMELION'S LIABILITY HEREUNDER IS EXPRESSLY LIMITED TO REPLACEMENT OR REPAIR OF THE PRODUCT. TO THE MAXIMUM EXTENT PERMITTED BY LAW, CAMELION SHALL NOT BE LIABLE TO ANY PURCHASER OF THE PRODUCT OR ANY THIRD PARTY FOR ANY SPECIAL, INDIRECT, CONSEQUENTIAL OR EXEMPLARY DAMAGES, INCLUDING BUT NOT LIMITED TO, LOST PROFITS, PROPERTY DAMAGE OR PERSONAL INJURY RELATED IN ANY WAY TO THE PRODUCT HOWSOEVER CAUSED, EVEN IF CAMELION HAD KNOWLEDGE OF THE POSSIBILITY OF SUCH DAMAGES. THE WARRANTIES SET FORTH HEREIN ARE IN LIEU OF ALL OTHER WARRANTIES, EXPRESS, IMPLIED, STATUTORY OR OTHERWISE, INCLUDING, WITHOUT LIMITATION, THE IMPLIED WARRANTIES OF MERCHANTABILITY AND FITNESS FOR A PARTICULAR PURPOSE, AND THOSE ARISING FROM COURSE OF DEALING, USAGE OR TRADE PRACTICE. IN THE EVENT THAT ANY APPLICABLE LAWS IMPOSE WARRANTIES, CONDITIONS OR OBLIGATIONS THAT CANNOT BE EXCLUDED OR MODIFIED, THIS PARAGRAPH SHALL APPLY TO THE GREATEST EXTENT ALLOWED BY SUCH LAWS. This Limited Warranty is made solely for the benefit of the original purchaser of the Product from Camelion or its approved reseller or distributor and is not assignable or transferable. To make a warranty claim, the purchaser must: (1) request and obtain a return merchandise authorization ("RMA") number and return location information (the "Return Location") from Camelion Support by emailing support@camelionna.com or by calling 1-833-990-2624; and (2) send the Product, including RMA number and receipt to the Return Location provided. DO NOT SEND IN PRODUCT WITHOUT FIRST OBTAINING AN RMA FROM CAMELION SUPPORT. THE ORIGINAL PURCHASER IS RESPONSIBLE (AND MUST PREPAY) ALL PACKAGING AND TRANSPORTATION COSTS TO SHIP PRODUCTS FOR WARRANTY SERVICE. NOTWITHSTANDING THE ABOVE, THIS LIMITED WARRANTY IS VOID AND DOES NOT APPLY TO PRODUCTS THAT: (a) were misused, mishandled, subjected to abuse or careless handling, accident, improperly stored, or operated under conditions of extreme voltage, temperature, shock, or vibration beyond Camelion's recommendations for safe and effective use; (b) improperly installed, operated or maintained; (c) are/were modified without the express written consent of Camelion; (d) have been disassembled, altered or repaired by anyone other than Camelion; (e) had defects which were reported after the Warranty Period. THIS LIMITED WARRANTY DOES NOT COVER: (1) normal wear and tear; (2) cosmetic damage that does not affect functionality; or (3) Products where the Camelion serial and/or lot number is missing, altered, or defaced.

## 注意事項

- 請勿將電池改裝、拆解、打開、摔下、輾壓、刺穿或切碎。
- 請勿將產品浸入水或其他液體中。
- 避免暴露在高溫和陽光直射
- 火災和燒傷風險。請勿打開、輾壓、加熱或焚燒。
- 將產品遠離明火以預防熱能積聚。
- 本電器不預期供生理、感知、心智能力、經驗或知識不足之使用者(包含孩童)使用，除非在對其負有安全責任的人員之監護或指導下安全使用
- 孩童應受監護，以確保孩童不嬉玩電器
- 本產品並非玩具，請避免兒童觸及。確保所有使用本產品的人員皆閱讀並遵守這些警告和說明。
- 如果有電池滲漏的狀況，請勿讓液體接觸皮膚或眼睛。
- 如果長時間不使用產品，請存放在陰涼乾燥的地方。
- 請勿將損壞的充電線或插頭用於本產品。
- 電池在充電過程中發熱屬正常現象，充電後其會逐漸冷卻。
- 充電時間可能因剩餘電量、電池壽命和環境溫度而異。
- 產品不應長時間處於放電的狀態。
- 產品接觸紡織品等易燃材料時不應充電。
- 使用時請確保產品放置於穩固且水平的表面上。
- LED 燈內的光源不可更換，當光源壽命結束時，必須更換整個 LED 燈。
- 僅提供標示於電器之超低安全電壓。
- 電器報廢前應取出電池。
- 取出電池前電器應切斷電源。
- 應安全地丟棄電池。

### 電池的回收處置



本產品含有一類必須與家庭廢棄物分開，單獨回收處置的充電電池。請依據您當地的環境法及規範回收處置電池。

廢電池請回收

### 1 年有限保固

Camelion 保證本產品（「產品」）自購買日起—（1）年內（「保固期」）不會有材料和工藝上的缺陷。對於保固期內回報的缺陷，Camelion 將根據 Camelion 的產品支援分析，自行決定修理或更換缺陷產品。更換零件和產品將會是全新的，或是可有效使用，功能和性能上將與原始零件相當，且在原始保固期的剩餘時間內亦享有保固。

Camelion 的責任據此明確限於更換或修理產品。在法律允許的最大範圍內，對於任何特殊、間接、持續性或懲戒性的損害，包括但不限於與產品有任何關聯且無論成因為何的利益損失、財產損失或人身傷害，Camelion 恕不對產品的任何購買者或任何第三方承擔責任，即使 Camelion 知悉此等傷害的可能性亦同。此處闡述的保證將代替所有其他明示、暗示、法定或其他形式的保證，包括但不限於針對特定用途的適銷性和適用性所暗示之保證，以及從交易、使用或貿易作業的過程中所產生之保證。若任何適用法律有規定不得排除或修改的保證、條件或義務，則本段落應在此等法律允許的最大範圍內適用。

本有限保固僅提供給 Camelion 或其批准的經銷商或分銷商之產品原始購買者，而不可分配或轉讓。欲提出保固要求，購買者必須：(1) 來信至 support@camelionna.com 或來電至 1-833-990-2624 向 Camelion 支援部門索取一組退貨授權 (RMA) 編號以及退貨地址資訊；(2) 將產品同 RMA 編號和收據一起寄至提供的退貨地點。若未先從 Camelion 支援部門取得 RMA，請勿寄送產品。原始購買者應承擔寄送產品接受保固服務的所有包裝和運輸費用（並且預先付費）。儘管上述內容，本有限保固對以下狀況之產品將失效且不適用：(a) 遺誤用、不當操作、濫用或粗心操作、發生意外、不當存放，或是在超出 Camelion 針對安全和有效使用之建議範圍的極端電壓、溫度、衝擊或振動下操作；(b) 安裝、操作或維護不當；(c) 在未經 Camelion 明確的書面同意下進行 / 經過改裝；(d) 曾被 Camelion 以外的任何人員拆解、改變或修理；(e) 回報缺陷時已過保固期。本有限保固不包含：(1) 正常磨損；(2) 不影響功能的外觀損壞；或是 (3) 其 Camelion 序號和 / 或批號缺失、遭更改或污損的產品。

設備名稱：充電式露營照明風扇 Equipment name	型號（型式）：OF444 Type designation (Type)					
單元 Unit	限用物質及其化學符號 Restricted substances and its chemical symbols					
	鉛 Lead (Pb)	汞 Mercury (Hg)	鎘 Cadmium (Cd)	六價鉻 Hexavalent chromium (Cr+6)	多溴聯苯 Polybrominated biphenyls (PBB)	多溴二苯醚 Polybrominated diphenyl ethers (PBDE)
	塑膠外殼	○	○	○	○	○
	塑膠配件	○	○	○	○	○
	砂膠配件	○	○	○	○	○
	三腳支架	○	○	○	○	○
	USB充電線	○	○	○	○	○
備考1. "超出0.1 wt %" 及 "超出0.01 wt %" 係指限用物質之百分比含量超出百分比含量基準值。 Note 1: "Exceeding 0.1 wt %" and "exceeding 0.01 wt %" indicate that the percentage content of the restricted substance exceeds the reference percentage value of presence condition. 備考2. "○" 係指該項限用物質之百分比含量未超出百分比含量基準值。 Note 2: "○" indicates that the percentage content of the restricted substance does not exceed the percentage of reference value of presence. 備考3. "—" 係指該項限用物質為排除項目。 Note 3: The "—" indicates that the restricted substance corresponds to the exemption.						

Distributed by:  
Costco Wholesale Corporation  
P.O. Box 34535  
Seattle, WA 98124-1535  
USA  
1-800-774-2678  
www.costco.com

Costco Wholesale Canada Ltd.\*  
415 W. Hunt Club Road  
Ottawa, Ontario  
K2E 1G5, Canada  
1-800-463-3783  
www.costco.ca  
\* faisant affaire au Québec sous le nom les Entrepôts Costco

Importado por:  
Importadora Primex S.A. de C.V.  
Bvd. Magnocentro No. 4  
San Fernando La Herradura  
Huixquilucan, Estado de México  
C.P. 52765  
RFC: IPR-930907-S70  
(55)-5246-5500  
www.costco.com.mx

Costco Wholesale Australia Pty Ltd  
17-21 Parramatta Road  
Lidcombe NSW 2141  
Australia  
www.costco.com.au

Costco Wholesale UK Ltd /  
Costco Online UK Ltd  
Hartspring Lane  
Watford, Herts  
WD25 8JS  
United Kingdom  
01923 213113  
www.costco.co.uk

Costco Wholesale Spain S.L.U.  
Polígono Empresarial Los Gavilanes  
C/ Agustín de Betancourt, 17  
28906 Getafe (Madrid) España  
NIF: B86509460  
900 111 155  
www.costco.es

Costco Wholesale Iceland ehf.  
Kauptún 3-7, 210 Gardabaer  
Iceland  
www.costco.is

Costco France  
1 avenue de Bréhat  
91140 Villebon-sur-Yvette  
France  
01 80 45 01 10  
www.costco.fr

Costco Wholesale Japan Ltd.  
2 Kakuchi, 2 Gaiku, Kaneda-Nishi  
361 Urakura, Kisarazu shi  
Chiba, 292-0007 Japan  
0570-200-800  
www.costco.co.jp

Costco Wholesale Korea, Ltd.  
40, Ilijk-ro  
Gwangmyeong-si  
Gyeonggi-do, 14347, Korea  
1899-9900  
www.costco.co.kr

Costco Wholesale New Zealand Limited  
2 Gunton Drive  
Westgate  
Auckland 0814  
New Zealand  
www.costco.co.nz

Costco (China) Investment Co., Ltd.  
Room 01 Mezzanine  
No. 5178, Kang Xin Highway  
Pudong New District  
Shanghai  
China 201315  
+86-21-6257-7065

Costco Wholesale Sweden AB  
Box 614  
114 11 Stockholm  
Sweden  
www.costco.se

MADE IN CHINA / 中國製造



FR  
Cet appareil et ses accessoires se recyclent  
A DÉPOSER EN MAGASIN  
A DÉPOSER EN DÉCHÈTÈRE  
Points de collecte sur www.quefairede mesdechets.fr  
Privilégiez la réparation ou le don de votre appareil !

FC UK CA CE CAN ICES-3(B)/NMB-3(B)

For any questions regarding your warranty or product contact Camelion Support at:

support@camelionna.com

1-833-990-2624 (English, French)  
Monday - Friday 9 am to 5 pm  
Eastern Standard Time

Camelion North America Inc.  
2572 Daniel-Johnson Boulevard 2nd Floor  
Laval, QC, H7T 2R3 Canada

有關保固或產品的任何問題可用下列方式聯絡 Camelion Support 支援中心：

support@camelionna.com

1-833-990-2624 (英語、法語)  
美東標準時間週一至週五上午 9 時至下午 5 時

Camelion North America Inc.  
2572 Daniel-Johnson Boulevard 2nd Floor  
Laval, QC, H7T 2R3 Canada